

Team **Refrigeration**

**REFRIGERATION
WHEN YOU NEED IT
WHERE YOU NEED IT**

We've been supporting, helping and providing back up to businesses for over a decade. Throughout our years of working with businesses just like yours, we've learned something very important...

**YOUR BUSINESS
IS **RELIANT** ON
REFRIGERATION**

**WITHOUT
REFRIGERATION
YOU MIGHT AS WELL
CLOSE THE DOORS**



Telephone 01934 245017 coolio@teamrefrigeration.co.uk
www.teamrefrigeration.co.uk

PICTURE THIS...

It's Friday afternoon and you notice your cold store isn't as cold as it should be. You phone around for an engineer but are told that nobody can get to you until Monday at the earliest.

Now you are scratching your head wondering what you're going to do with your stock and then you remember your delivery that is booked for Monday morning.

SUDDENLY YOU START TO



**BUT THIS
DOESN'T
HAVE TO
BE YOU!**





WE'RE NOT YOUR TYPICAL REFRIGERATION COMPANY

We understand just how important refrigeration is to your business (and it might be more important than even you realise).

We first realised this in 2006 when we bought our first refrigerated trailers. Since then we have helped thousands of businesses in all sorts of industries when the heat is on.

Team Refrigeration are on hand 24 hours a day, 365 days a year to achieve one purpose - to make sure you **STAY COOL!**

It is this team of people who have helped businesses large and small, all across the country to save thousands of pounds in lost stock and loss of revenue.



CLIVEDEN



WILLIAMS | ADVANCED
ENGINEERING



Telephone 01934 245017 coolio@teamrefrigeration.co.uk
www.teamrefrigeration.co.uk

WE KNOW OUR STUFF...

To cut a long story short...

We understand your business and we know what works! And when we work together, you'll have the UK's No1 refrigeration team at your service too.

Our team have the experience and knowledge to listen carefully to your requirements. We will work out the best and most cost effective solution for you too.

PLANNED REQUIREMENT

If you are planning some maintenance on your cold store or need to carry some extra stock to increase capacity, we've got you covered too.

Whether you need a small trailer or a huge 40ft refrigerated container, we can deliver where you need it and at a time to suit you. Best of all it will only be with you for as long as you need it even if your plans change.

EMERGENCY REQUIREMENT

OUR PROMISE

We will get emergency refrigeration to you within 2-4 hours of your call.

In rare times of exceptional demand, when this is not possible, we will make you aware of this up front and guarantee a delivery time.

We don't have long commitments or contracts, our clients stay with us because of the service they receive.



Chiller/Freezer Trailer

Our trailers run on single phase 13A 240V supply and are supplied with plenty of cable with extra extension leads if required.

Shelving is optional at no extra cost and for extra security we provide a wheel clamp, door lock and stabiliser legs.

Programmable operation | Auto and manual defrost | Easy clean interior | Removable shelving | Internal lighting | Lock fitted as standard | Security features: wheel clamp, door lock and stabiliser legs | Temperature range +15°C/-20°C | Power cable and extension leads supplied | Power required 13A single phase.

External		Internal		Openings		Capacity	
Length	4.5m (15ft)	Length	3m (10ft)	Butcher door	0.8m	Usable Volume	11.04m ³ 390ft ³
Width	1.95m (6.2ft)	Width	1.82m (6ft)	Full width	1.66m		
Height	2.5m (8.2ft)	Height	2m (6.6ft)				

20ft Refrigerated Container

Temperature range from -35°C to +35°C | Can store upto x 8 Euro pallets per layer | Low noise and low energy consumption (in comparison to our competitors) | Easy Open Cargo door | Internal lighting including emergency internal lighting in the event of a power failure | Nationwide delivery.

40ft Refrigerated Container

Temperature range from -35°C to +35°C | Can store up to x 20 Euro pallets per layer or 18 Metric | Low noise and low energy consumption (in comparison to our competitors) | Easy Open Butchers door | Flat flooring for easy manoeuvre of trolleys etc | Aluminium loading ramp | Internal lighting including emergency internal lighting in the event of a power failure | Man trap panic alarm | Nationwide delivery.

Optional Features for Containers

Remote monitoring system (can be used by mobile phone, tablet or PC anywhere in the world) | Security Grill | Plastic Strip Curtains.



External		Internal		Openings		Capacity	
Length	6m (20ft)	Length	5.56m (7ft 10in)	Width	2.27m (7ft 5in)	Usable cc	22m ³
Width	2.4m (8ft)	Width	2.29m (7ft 5in)	Height	2.18m (7ft 1in)	Pallet Euro	8
Height	2.5m (8ft 6in)	Height	2.23m (7ft 3in)	Butcher's Door	1.8m x 2m	Pallet Metric	7

External		Internal		Openings		Capacity	
Length	12m (40ft)	Length	11.62m (38ft 1in)	Width	2.27m (7ft 5in)	Usable cc	54m ³
Width	2.4m (8ft)	Width	2.29m (7ft 5in)	Height	2.18m (7ft 1in)	Pallet Euro	20
Height	2.5m (8ft 6in)	Height	2.23m (7ft 3in)	Butcher's Door	1.8m x 2m	Pallet Metric	18



"Keeping it cool with prices lower than the fridge temps! Our business suffered with complications regarding our fridges and freezer and were looking for an affordable, effective service. Team Refrigeration not only supplied outstanding customer service by way of Reg Anderson but also swift delivery, collection and frequent, reliable communication. This outstanding service delivery meant that any repercussions were limited and the business was able to continue to supply our large customer base. I would highly recommend Team Refrigeration for any temperature control needs."

Tom, Somerset Larder



"We've used you many times. Always super helpful and can get trailers at all sorts of times of the day which is great as a business. Ricky and Julian both provide great service and would definitely recommend using them as they've never been anything other than super helpful and friendly."

Martin Watkins, KFC



"Fantastic service - I use these guys regularly they never let me down, are flexible and always deliver & collect on time. Ricky is a pleasure to deal with, always on hand to answer any questions. Costs were very competitive highly recommend."

Claire, Dairy Crest

WHAT'S NEXT?

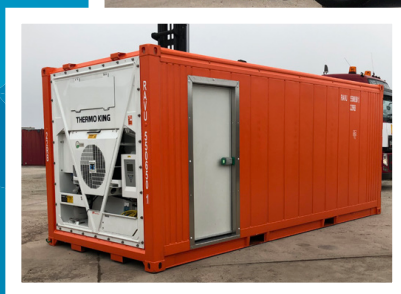
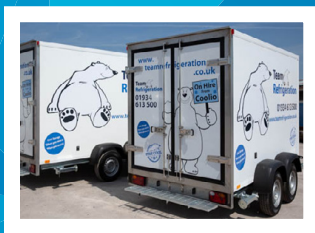
If you're interested in how we can help (and you should be) then let's chat. Coolio is always on hand and is keen to talk about working with you on your refrigeration requirements.

01934 245017

coolio@teamrefrigeration.co.uk



**Telephone 01934 245017 coolio@teamrefrigeration.co.uk
www.teamrefrigeration.co.uk**



Telephone 01934 245017
coolio@teamrefrigeration.co.uk
www.teamrefrigeration.co.uk